

# Who participates in community-based screening for Hepatitis C infection

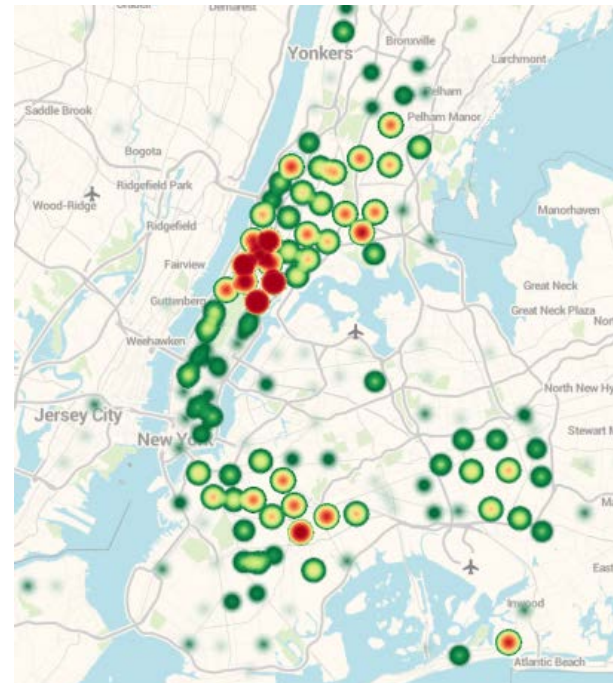
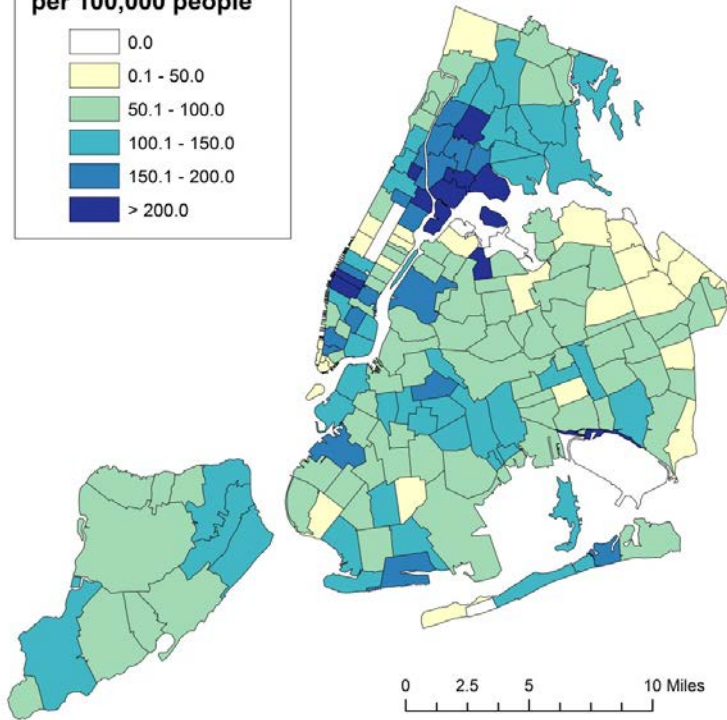
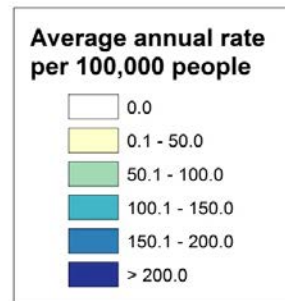
Donald P. Kotler, MD<sup>1,2</sup>, Yvette James, MA<sup>2</sup>, Amiyr Holland<sup>2</sup>,  
Joseph Green<sup>3</sup>, Escott Solomon<sup>2</sup>, Gloria Searson, ACSW<sup>2</sup>

<sup>1</sup>Mount Sinai St. Luke's and Roosevelt Hospitals,

<sup>2</sup>Coalition on Positive Health Empowerment, New York, NY,

<sup>3</sup>Northwestern University Medical School, Chicago, IL

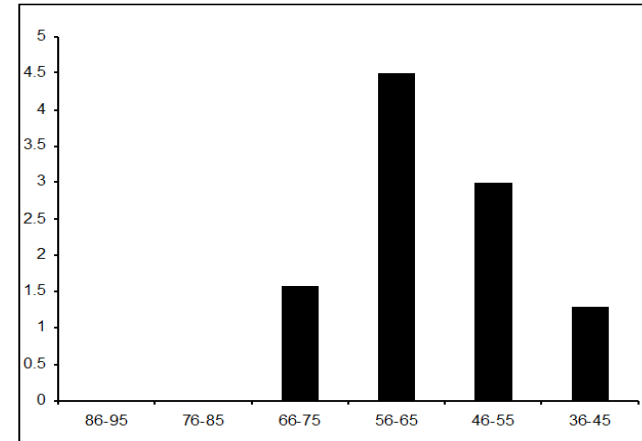
# COPE testing vs. cases reported to the NYC DOH



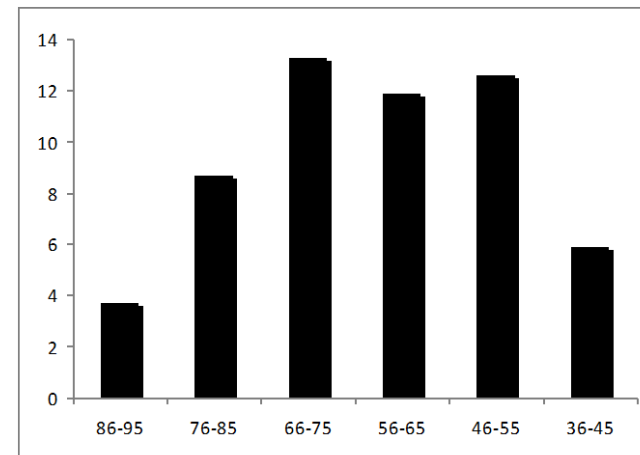
# HCV seroprevalence by sex, race, age, and IVDU

	Number tested	% positive
AA male	1,304	7.6
AA female	926	5.3
Hispanic male	377	21.2
Hispanic female	423	3.5
Caucasian male	74	12.2
Caucasian female	88	5.7

Deny IVDU



Admit to IVDU



# Logistic regression analysis

- The relative effects of sex, race, age IV drug use, and possession of insurance on HCV seroprevalence were evaluated using logistic regression in 1,609 participants
- The overall model had a Chi<sup>2</sup> value of 220.8 with 8 df, and a p<0.0001.
- A history of IV drug use had the highest Odd's ratio at 10.3 (95%CI 6.4-16.4).
  - In contrast, membership in the birth cohort had an Odd's ratio of 1.8 (95%CI 1.2-2.8),
  - Membership in the birth cohort had a lesser effect than a history of IVDU, the effect of being male, (2.8, 95% CI 1.8-4.5), Hispanic (1.9, 95% CI 1.2-2.9), Caucasian (2.5, 95% CI 1.1-5.5), and greater than in people lacking health care coverage (0.3, 95% CI 0.1-0.8).

Sample size	1609
Cases with Y=0	1488 (92.48%)
Cases with Y=1	121 (7.52%)

Overall Model Fit	
Null model -2 Log Likelihood	858.857
Full model -2 Log Likelihood	638.023
Chi-squared	220.834
DF	8
Significance level	P < 0.0001

Coefficients and Standard Errors			
Variable	Coefficient	Std. Error	P
IVDU=1	2.32986	0.2382	<0.0001
Insured=0	-1.14048	0.45443	0.0121
Birth_ '450'65=1	0.58884	0.21949	0.0073
Male=1	1.04533	0.23715	<0.0001
Race="Hispanic"	0.63637	0.22274	0.0043
Race="Other"	-16.68538	2374.34214	0.9944
Race="Unknown"	0.70543	1.25354	0.5736
Race="White"	0.90102	0.41388	0.0295
Constant	-4.7505		

Odds Ratios and 95% Confidence Intervals		
Variable	Odds ratio	95% CI
IVDU=1	10.2765	6.4430 to 16.3910
Insured=0	0.3197	0.1312 to 0.7790
Birth_ '450'65=1	1.8019	1.1719 to 2.7705
Male=1	2.8443	1.7869 to 4.5274
Race="Hispanic"	1.8896	1.2212 to 2.9240
Race="Other"	0	
Race="Unknown"	2.0247	0.1735 to 23.6264
Race="White"	2.4621	1.0940 to 5.5412