



Development of an HIV Monitoring & Evaluation Tool: Assessing Testing, Results and Linkage to Care

Donna Futterman, MD, Lindsay DuBois, MPH,
Stephen Stafford, Hong Shao, MPH

Building the Tool

Objective

Create an M&E tool to systematically track HIV testing, results and linkage to care (LTC) data on HIV+ patients across Montefiore to inform CQI efforts

Methods

Creation of Tool

2011

- Created M&E tool tracking numerator data: # HIV tests and HIV+ diagnoses
- Granted “Exempt” status by IRB

2014

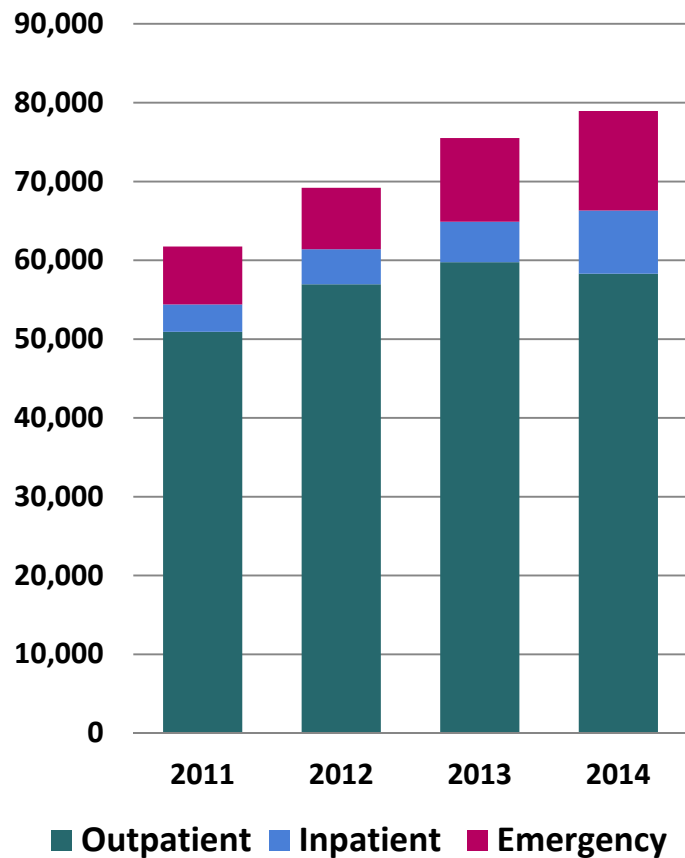
- LTC data added
- Updated to reflect 4th Gen
- Denominator data obtained for some sectors (CLG)
- MMC CQI Committee approval

Current Tool Features

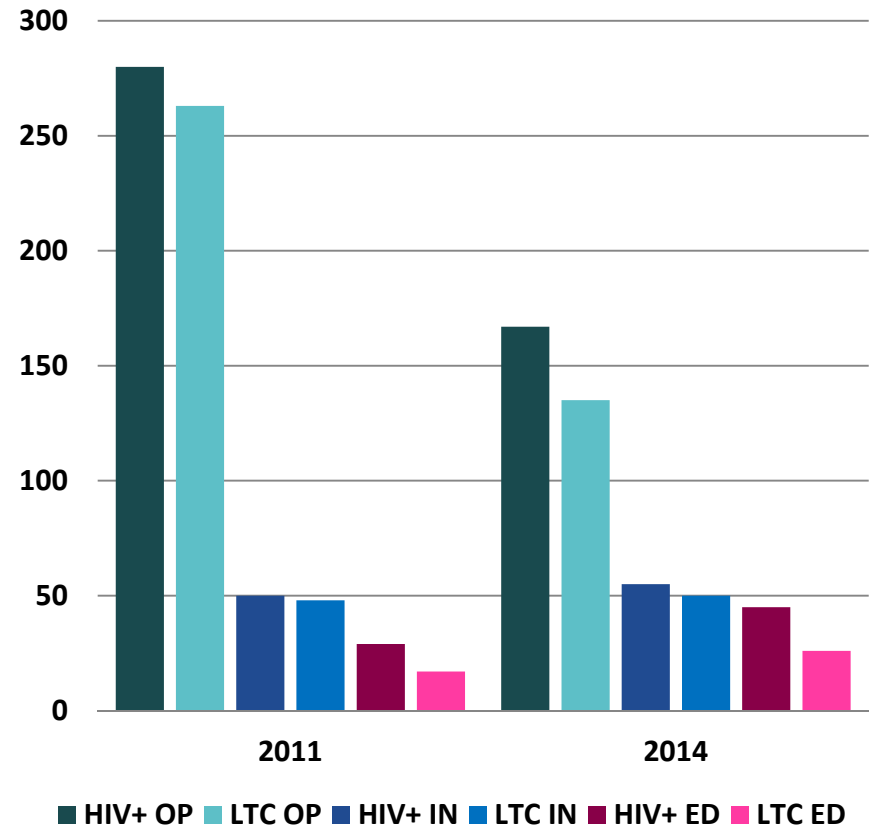
- Reports test-level laboratory data with demographics, hospital sector & facility
- Reports CD4 and VL as proxy for LTC
- Identifies both newly diagnosed and HIV+ patients who were relinked to care through routine testing
- Refreshed monthly and shared with medical directors across MMC

Preliminary Findings

HIV Testing at MMC



HIV+ Diagnosis & LTC at MMC



Conclusion

- Creating effective monitoring/CQI tools at large, complex medical centers, served by different data systems, requires multi-system collaboration and ongoing validation

Lessons Learned

- Ongoing updates required to reflect changes to testing technology and IT/EMR systems
- Data triangulation is key
- Denominator data important yet difficult to obtain/validate
- Tool has identified points along the HIV care cascade that require QI measures