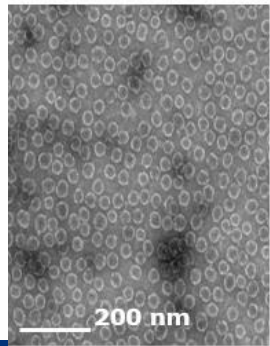


Capsid Assembly Modulator (CAM)

CAM also known as: Core protein allosteric modulator (CpAM), core (protein) inhibitor or capsid assembly effector/inhibitor

- At least 2 CAM sub-classes with different modulation of core protein/capsid
 - Normal (“empty”) capsids
 - Aberrant structured capsids/core aggregates
- Old/current nomenclatures
 - Class I – normal (Janssen & others) or aberrant (Roche & others)
 - Class II – aberrant (Janssen & others) or normal (Roche & others)
- Proposed new nomenclature based on structure

CAM-N
(Normal)



CAM-A
(Aberrant)

