



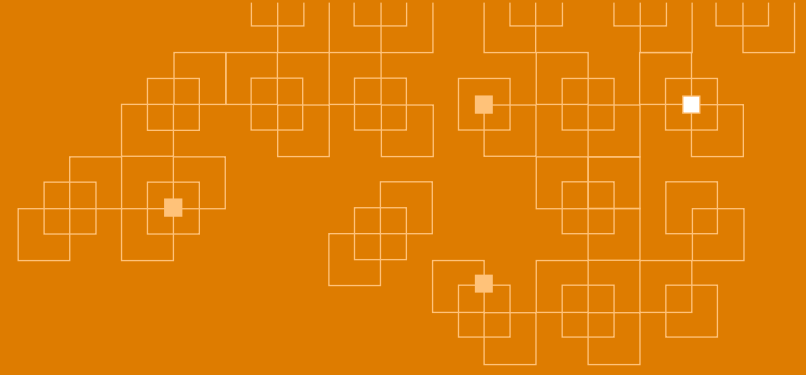
**THE FORUM**  
For Collaborative Research<sup>SM</sup>

# LF15 Updates: Forum Data & Analysis Center MASH Placebo Database

September 6, 2023

Veronica Miller

Michael Cooreman



**Today: Brief Summary Overview**  
**November: Full WG Meeting**

# The Data & Analysis Center Team



**THE FORUM**  
For Collaborative Research<sup>SM</sup>

Principal Investigator/Director  
Veronica Miller, PhD



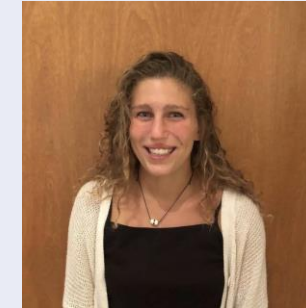
Lead Data Scientist  
Margot Yann, PhD



IT & Operations Director  
Chris Hoffman, PhD



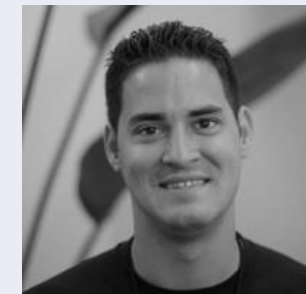
Data Analyst  
Sammy Berman, MPH

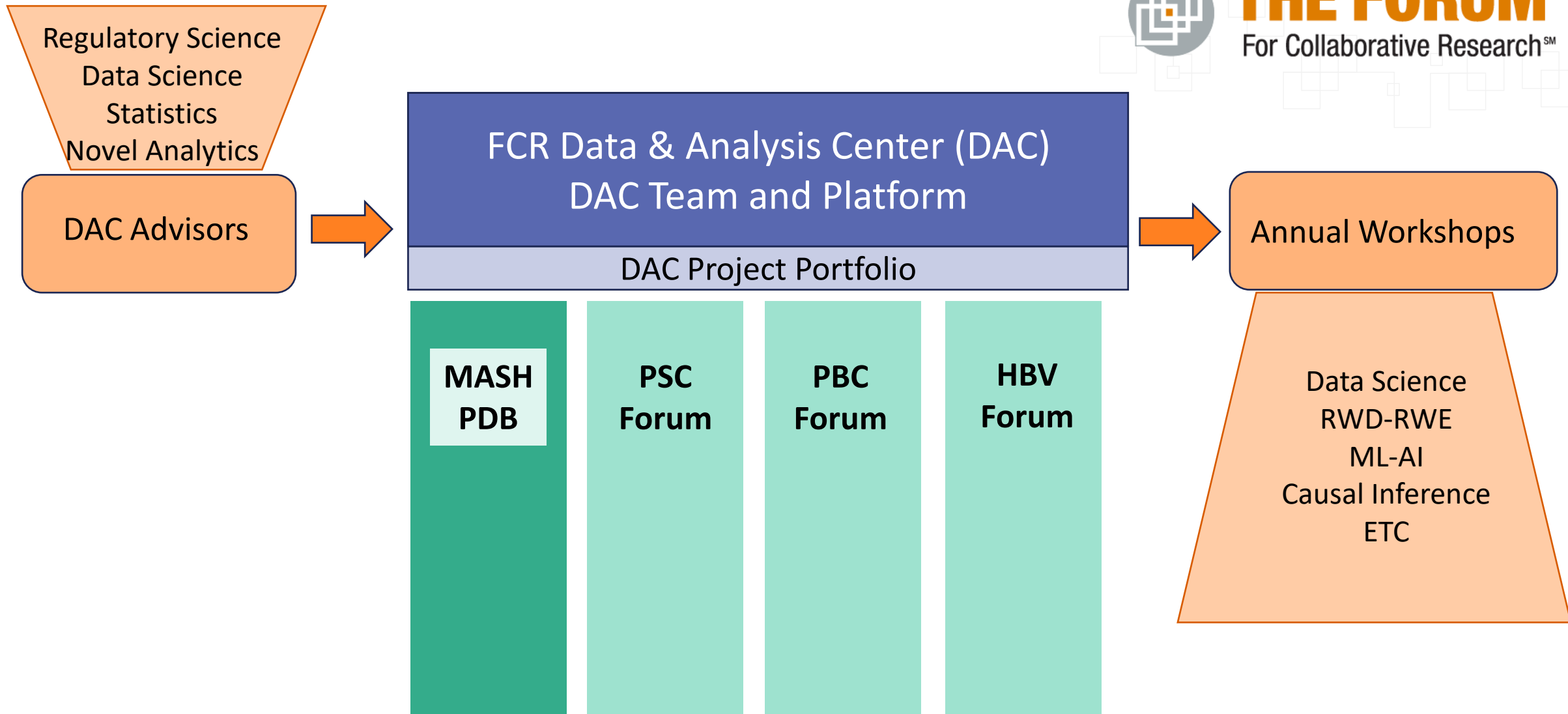


Strategy/Business Development  
Brenda Rodriguez, MBA, MS



Technical/Infrastructure  
Zach Rooney, MSCS





# Data Protection by Design & by Default



**THE FORUM**  
For Collaborative Research<sup>SM</sup>

- DAC platform (SRDC) approved for highly sensitive data
- DAC Security Plan documents safe design and practice
  - Meets/exceeds US requirements for de-identified data
- GRDP
  - Pseudonymization
  - Working with Berkeley Compliance (Privacy Officer)

Questions?  
Ask Chris Hoffman

# MASH PDB Working Group/Project



Manal Abdelmalek  
Michael Cooreman

Co-chairs, LITMUS,  
NIMBLE, Patient,  
Statistics

Data contributors +  
experts across stakeholder  
groups

**Co-chairs**

**MASH PDB Executive Comm**

**MASH PDB Steering Comm**

**Statistics & Analysis WG**

Open to academic,  
industry, and regulatory  
statisticians and folks not  
afraid of cohorting with  
statisticians

**MASH PDB Working Group**

Open to all LF  
members

# MASH PDB Progress

- Data Use Agreement
  - Distributed and under review
- CDISC standards
  - Potential collaboration for MASH standards
- Database infrastructure
  - Mapping data fields using CDISC and FDA technical standards for MASH

Questions?  
Ask Chris Hoffman

Questions?  
Ask Margot Yann and  
Sammy Berman





# Themes/questions MASH PDB Project



**THE FORUM**  
For Collaborative Research<sup>SM</sup>

- Natural history of MASH in untreated trial patients
- Comparability of RCT patients to “real world” patients
- Predictors of disease improvement, stability, worsening
- Fluctuation in safety parameters in untreated patients
- Screen failures
- Application of AI/ML to paired biopsies
- Comparison of causal inference statistical methods
- Shared placebo arm in future trials
- Others?

... as identified  
by our Working  
Group

# Data Sources & Data Availability

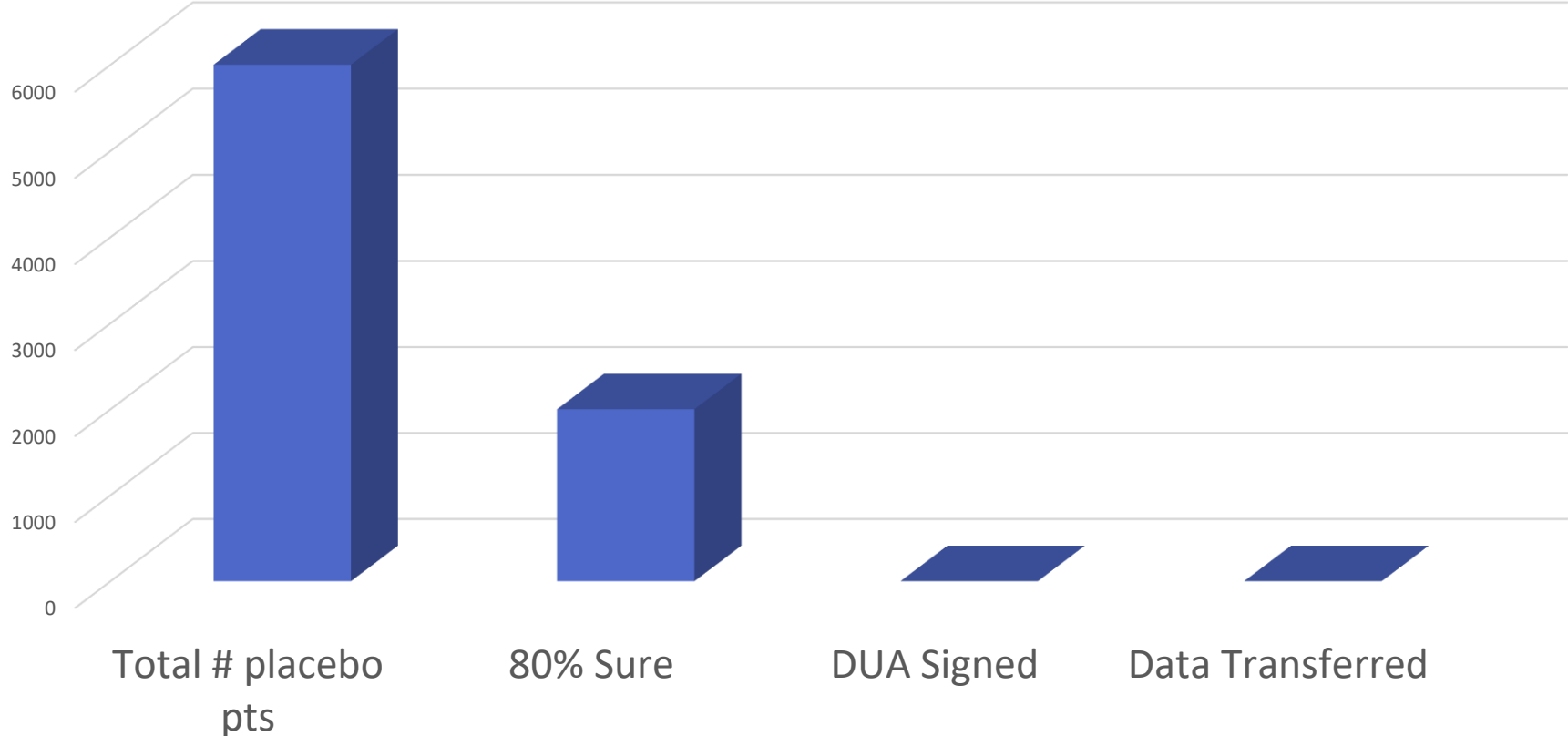


- Invited to participate:
  - All completed phase 2 and phase 3 studies
- Potential total # of placebo patients: ~5,500\*
- Strong commitment: ~1,950
  - Verbal, “handshake”, reviewing DUA
- Negative: 0

Questions?  
Ask Brenda Rodriguez or  
Chris Hoffman

\* Azza Karrar LF14 Presentation

# Data Contribution Tracker



# Special Announcement

- Excellence in Collaboration Award
  - To first company to sign DUA!



# First Proposed Research Use Case Analysis of Biomarker Fluctuation



- Over time/across studies
- Circulating
  - Clinical
  - Liver function
  - Fibrosis
  - Metabolic
- Imaging
- Specialized biomarkers (next phase)

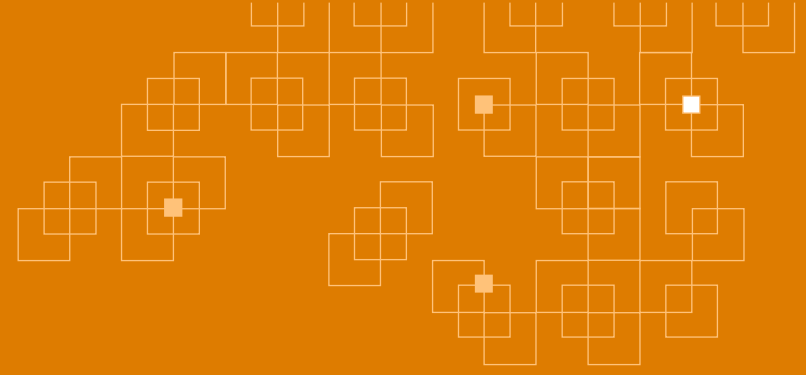
Patient demographics  
Co-morbidities  
Other key characteristics

Questions?  
Ask Margot Yann

# Next Steps

- Discuss proposal with SC and full WG
- Write data analysis plan
- Publication plans
- Develop next questions!





**Thank You!**