

# Indications for Testing among Reported Cases of Hepatitis C Virus Infection from Enhanced Hepatitis Surveillance Sites- United States, 2004-2010

**Reena Mahajan, MD, MHS**

Centers for Disease Control and Prevention  
2012 National Summit on HIV and Viral Hepatitis  
November 27, 2012



# Background

- ❑ **2.7-3.9 million persons chronically HCV infected**
- ❑ **45-85% unaware of their infection**
- ❑ **Most born from 1945-1965**
- ❑ **August 2012- CDC released a recommendation for one-time HCV screening of persons born from 1945-1965**
- ❑ **Previous recommendations were only risk-based**

\*Armstrong GL. Ann Int Med 2006; Roblin DW. Am J Managed Care 2011; Southern WN. J Viral Hepat 2011; Volk ML. Hepatology 2009; Smith BD. [Abstract no. 241]. American Association for the Study of Liver Disease, November 6, 2011. San Francisco, CA 2011



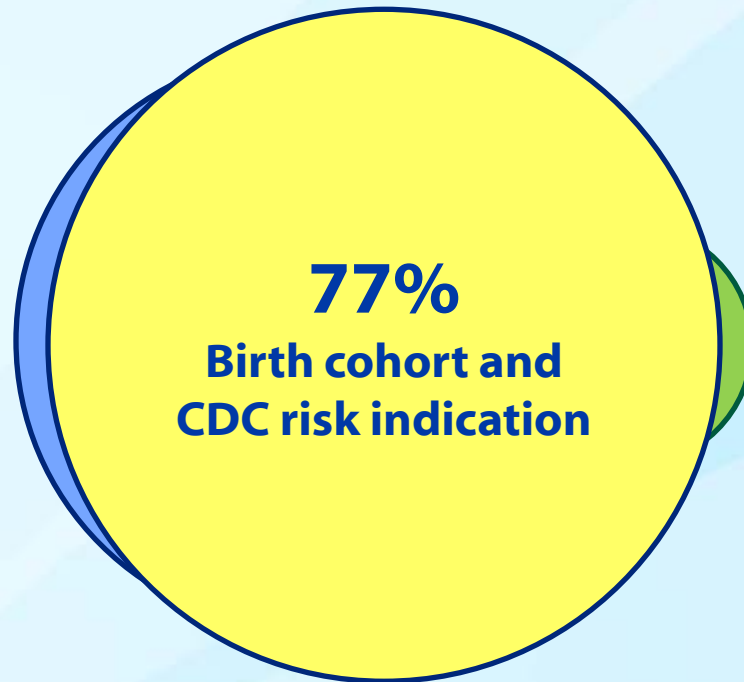
## Objective

- ❑ Describe indications for testing by birth cohort among reported HCV cases from four enhanced hepatitis surveillance jurisdictions

## **Methods**

- ❑ Analyzed chronic HCV cases reported from 2004-2010 from 4 hepatitis surveillance sites**
- ❑ Cases determined by positive HCV laboratory markers**
- ❑ Health department staff abstract demographics and indications for testing from medical records of cases**
- ❑ Information abstracted into standardized form and compiled into a surveillance database**

# Birth Cohort Screening and CDC Risk Indication



## **Conclusion**

- ❑ Overall 77% of cases would have been captured by screening those born from 1945-1965 and those with any CDC risk indication**
- ❑ Injection drug use was the main risk factor for those born > 1945**
- ❑ Data support augmenting CDC risk-based screening with screening adults in the 1945-1965 birth cohort**

# Acknowledgments:

- Stephen J Liu
- Monina Klevens
- Scott D Holmberg
- Colorado Department of Public Health and Environment
- Connecticut Department of Health
- Minnesota Department of Health
- New York State Department of Health

**For more information please contact Centers for Disease Control and Prevention**

1600 Clifton Road NE, Atlanta, GA 30333

Telephone: 1-800-CDC-INFO (232-4636)/TTY: 1-888-232-6348

E-mail: [cdcinfo@cdc.gov](mailto:cdcinfo@cdc.gov) Web: <http://www.cdc.gov>

The findings and conclusions in this report are those of the authors and do not necessarily represent the official position of the Centers for Disease Control and Prevention.